

REVISIONS		
REV. NO.	DESCRIPTION	DATE

PIER NO. 13 BAR LIST - PHASE I					
EPOXY COATED					
MARK	SIZE	NO.	FORM	LENGTH	VARIATION
BH1	#10	12	BNT	37'-1"	
BH2	#10	12	STR	35'-8"	
BH3	#6	12	STR	35'-8"	
BH4	#5	6	BNT	8'-5"	
BH8	#10	6	BNT	36'-3"	
BH9	#10	4	STR	34'-10"	
BH12	#5	2	BNT	6'-0"	
C1	#10	142	BNT	15'-3"	
C2	#4	20	BNT	9'-0"	
C3	#4	16	BNT	7'-9"	
C4	#10	78	STR	39'-5"	
C5	#10	64	STR	41'-0"	
F1	#8	120	STR	7'-6"	
F2	#4	54	BNT	16'-11"	
P1	#4	12	BNT	7'-10"	
P2	#4	40	BNT	5'-8"	
P3	#4	12	BNT	8'-2"	
P4	#4	2	BNT	13'-11"	
P5	#4	2	BNT	14'-7"	
S1	#5	76	BNT	15'-9"	
S2	#4	118	BNT	18'-1"	
S3	#4	12	BNT	16'-10" AVG	10'-1" TO 23'-7"
S4	#4	236	BNT	17'-1"	
S5	#4	24	BNT	22'-11" AVG	17'-7" TO 28'-3"
S6	#5	38	BNT	14'-6"	
SC1	#4	10	BNT	13'-3"	
SC2	#4	12	BNT	5'-7"	
DRILLED SHAFTS					
NON-EPOXY COATED					
D1	#11	84	BNT	32'-3"	
DS1	W20	3	SPIRAL	729'-4"	

①②
②

PIER NO. 13 BAR LIST - PHASE II					
EPOXY COATED					
MARK	SIZE	NO.	FORM	LENGTH	VARIATION
BH4	#5	6	BNT	8'-5"	
BH5	#10	12	BNT	36'-3"	
BH6	#10	12	STR	34'-10"	
BH7	#6	12	STR	34'-10"	
BH10	#10	6	BNT	35'-3"	
BH11	#10	4	STR	33'-10"	
BH12	#5	2	BNT	6'-0"	
C1	#10	88	BNT	15'-3"	
C2	#4	12	BNT	9'-0"	
C3	#4	16	BNT	7'-9"	
C4	#10	51	STR	39'-5"	
C5	#10	37	STR	41'-0"	
F1	#8	80	STR	7'-6"	
F2	#4	36	BNT	16'-11"	
P1	#4	12	BNT	7'-10"	
P2	#4	40	BNT	5'-8"	
P3	#4	12	BNT	8'-2"	
P4	#4	2	BNT	13'-11"	
P5	#4	2	BNT	14'-7"	
S1	#5	76	BNT	15'-9"	
S2	#4	118	BNT	18'-1"	
S3	#4	12	BNT	16'-10" AVG	10'-1" TO 23'-7"
S4	#4	118	BNT	17'-1"	
S5	#4	12	BNT	22'-11" AVG	17'-7" TO 28'-3"
S6	#5	38	BNT	14'-6"	
SC1	#4	10	BNT	13'-3"	
SC2	#4	12	BNT	5'-7"	
DRILLED SHAFTS					
NON-EPOXY COATED					
D1	#11	56	BNT	32'-3"	
DS1	W20	2	SPIRAL	729'-4"	

①②
②

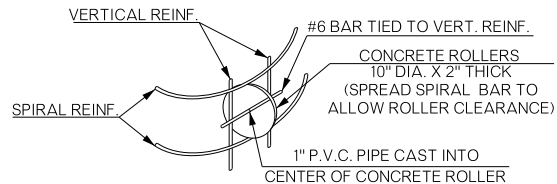
PIER NO. 14 BAR LIST - PHASE I					
EPOXY COATED					
MARK	SIZE	NO.	FORM	LENGTH	VARIATION
BH1	#10	12	BNT	37'-1"	
BH2	#10	12	STR	35'-8"	
BH3	#6	12	STR	35'-8"	
BH4	#5	6	BNT	8'-5"	
BH8	#10	6	BNT	36'-3"	
BH9	#10	4	STR	34'-10"	
BH12	#5	2	BNT	6'-0"	
C1	#10	142	BNT	15'-3"	
C2	#4	20	BNT	9'-0"	
C3	#4	16	BNT	7'-9"	
C4	#10	78	STR	32'-5"	
C5	#10	64	STR	34'-0"	
F1	#8	120	STR	7'-6"	
F2	#4	54	BNT	16'-11"	
P1	#4	12	BNT	7'-10"	
P2	#4	40	BNT	5'-8"	
P3	#4	12	BNT	8'-2"	
P4	#4	2	BNT	13'-11"	
P5	#4	2	BNT	14'-7"	
S1	#5	76	BNT	15'-9"	
S2	#4	90	BNT	18'-1"	
S3	#4	12	BNT	16'-10" AVG	10'-1" TO 23'-7"
S4	#4	180	BNT	17'-1"	
S5	#4	24	BNT	22'-11" AVG	17'-7" TO 28'-3"
S6	#5	38	BNT	14'-6"	
SC1	#4	10	BNT	13'-3"	
SC2	#4	12	BNT	5'-7"	
DRILLED SHAFTS					
NON-EPOXY COATED					
D1	#11	84	BNT	28'-3"	
DS1	W20	3	SPIRAL	628'-9"	

①②
②

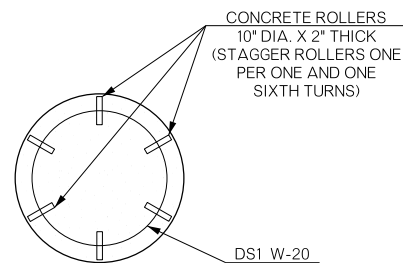
PIER NO. 14 BAR LIST - PHASE II					
EPOXY COATED					
MARK	SIZE	NO.	FORM	LENGTH	VARIATION
BH4	#5	6	BNT	8'-5"	
BH5	#10	12	BNT	36'-3"	
BH6	#10	12	STR	34'-10"	
BH7	#6	12	STR	34'-10"	
BH10	#10	6	BNT	35'-3"	
BH11	#10	4	STR	33'-10"	
BH12	#5	2	BNT	6'-0"	
C1	#10	88	BNT	15'-3"	
C2	#4	12	BNT	9'-0"	
C3	#4	16	BNT	7'-9"	
C4	#10	51	STR	32'-5"	
C5	#10	37	STR	34'-0"	
F1	#8	80	STR	7'-6"	
F2	#4	36	BNT	16'-11"	
P1	#4	12	BNT	7'-10"	
P2	#4	40	BNT	5'-8"	
P3	#4	12	BNT	8'-2"	
P4	#4	2	BNT	13'-11"	
P5	#4	2	BNT	14'-7"	
S1	#5	76	BNT	15'-9"	
S2	#4	90	BNT	18'-1"	
S3	#4	12	BNT	16'-10" AVG	10'-1" TO 23'-7"
S4	#4	90	BNT	17'-1"	
S5	#4	12	BNT	22'-11" AVG	17'-7" TO 28'-3"
S6	#5	38	BNT	14'-6"	
SC1	#4	10	BNT	13'-3"	
SC2	#4	12	BNT	5'-7"	
DRILLED SHAFTS					
NON-EPOXY COATED					
D1	#11	56	BNT	28'-3"	
DS1	W20	2	SPIRAL	628'-9"	

①②
②

PIER ELEVATIONS AND PEDESTAL HEIGHTS																
LOCATION	PEDESTAL A		PEDESTAL B		PEDESTAL C		PEDESTAL D		PEDESTAL E		PEDESTAL F		PEDESTAL G		PEDESTAL H	
	ELEV.	HEIGHT	ELEV.	HEIGHT	ELEV.	HEIGHT	ELEV.	HEIGHT	ELEV.	HEIGHT	ELEV.	HEIGHT	ELEV.	HEIGHT	ELEV.	HEIGHT
PIER NO. 13	956.22	3"	956.40	5 1/8"	956.58	7 3/8"	956.76	9 1/2"	954.60	3"	954.78	5 1/8"	954.96	7 3/8"	955.14	9 1/2"
PIER NO. 14	958.89	3"	959.07	5 1/8"	959.25	7 3/8"	959.43	9 1/2"	957.27	3"	957.45	5 1/8"	957.63	7 3/8"	957.81	9 1/2"

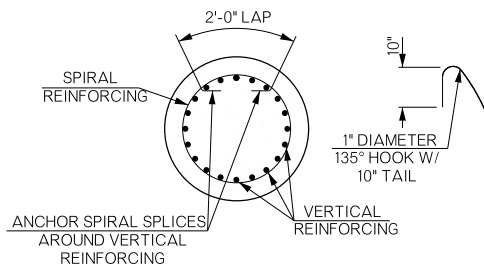


DETAIL OF ROLLER INSTALLATION



DETAIL OF ROLLER PLACEMENT

NOTE: CONCRETE USED IN THE CONCRETE ROLLERS SHALL HAVE A MINIMUM 28 DAY COMPRESSIVE STRENGTH OF 4000 PSI. PLASTIC ROLLERS MAY BE SUBSTITUTED FOR THE CONCRETE ROLLERS IN ACCORDANCE WITH THE SPECIAL PROVISION FOR DRILLED SHAFT FOUNDATIONS.



DETAIL OF SPIRAL REINFORCING SPLICE

NOTE: SPIRAL BARS SHALL CONFORM TO AASHTO A32. SPIRAL BAR LENGTH DOES NOT INCLUDE LAP. IF LAP IS REQUIRED, THE LENGTH OF THE LAP SHALL BE AS SHOWN.

- ① ANY PROJECTED LENGTH PAST TOP OF DRILLED SHAFT SHALL NOT BE CONSIDERED ADDITIONAL PAY LENGTH FOR DRILLED SHAFT.
- ② INCLUDED IN PRICE BID PER LINEAR FOOT OF DRILLED SHAFT
- ③ MECHANICALLY SPLICED TO PHASE I REINFORCING

PIER QUANTITIES - PHASE I				
ITEM	UNIT	No. 13	No. 14	TOTAL
CLASS A CONCRETE	C.Y.	188.7	164.5	353.2
EPOXY COATED REINFORCING STEEL	LB.	49710	44460	94170
DRILLED SHAFTS 72" DIAMETER	L.F.	84	72	156
WATER REPELLENT (VISUALLY INSPECTED)	S.Y.	81	81	162
SUBSTRUCTURE EXCAVATION COMMON	C.Y.	175	120	295
CLSM BACKFILL	C.Y.	31.1	31.1	62.2

PIER QUANTITIES - PHASE II				
ITEM	UNIT	No. 13	No. 14	TOTAL
CLASS A CONCRETE	C.Y.	149.0	132.6	281.6
EPOXY COATED REINFORCING STEEL	LB.	34000	30690	64690
DRILLED SHAFTS 72" DIAMETER	L.F.	56	48	104
WATER REPELLENT (VISUALLY INSPECTED)	S.Y.	81	81	162
SUBSTRUCTURE EXCAVATION COMMON	C.Y.	90	90	180
CLSM BACKFILL	C.Y.	20.7	20.7	41.4

BRIDGE "A"		LOGAN COUNTY		Design	GT	11/15
SH-33 OVER COTTONWOOD CREEK				Detail	TIS	2/16
DETAILS OF PIERS NO. 13 & 14 (SHEET 4 OF 4)				Check		
				Squad	PEARSON	
				Engr.	HERNANDEZ	
STATE OF OKLAHOMA		DEPARTMENT OF TRANSPORTATION				
JOB/PIECE NO. 21860(04)				SHEET NO. B044		